

Newsletter

Wylde Green Primary School



Issue 6

November 2025

Key Dates

Friday 28th November	PTFA Non-uniform day for bottle stall at Christmas fayre
Friday 5th December	PTFA Non-uniform day for cake/chocolate stall at Christmas Fayre
Tuesday 9th December	9.30 am: Reception Nativity (Bluebell) 2.30 pm: Reception Nativity (Poppy)
Wednesday 10th December	Christmas Dinner
Thursday 11th December	Christmas Jumper Day
Friday 12th December	2:15pm Year 3 Carol Concert at Emmanuel Church and 5:00-7:30pm PTFA Christmas Fayre
Tuesday 16th December	Reception and KS1 Christmas Parties
Wednesday 17th December	KS2 Christmas Parties
Friday 19th December	School Closes for Christmas Break

Year 1 Victorian Day

An exciting week in school again! Year 1 looked fantastic in their costumes, learning about school life during Victorian times. They enjoyed learning the National Anthem, writing using ink and dip pens and using slate and chalk. The teachers had the cane out but we are pleased to report that all the children were exceedingly well behaved and worked hard!



'We took turns to play Hopscotch' - George



'I loved using the ink and dip pens' - Sid



'We liked dressing in the Victorian clothes' - Florence

Year 5 Back to Back houses

In Year 5, we have developed our history learning with an engaging trip to the back-to-back houses in Birmingham. During the visit, we explored what life was like in Birmingham during the Victorian era. We learned about the stark differences in housing between wealthy and impoverished families and even had the opportunity to try on traditional clothing that children of the time would have worn. Additionally, we explored the types of food they ate, how meals were prepared, and what their sleeping arrangements were like. A highlight of the trip was making rag rugs, a common pastime for Victorian children. Back at school, we will continue to delve into Victorian life in Birmingham, comparing how the city has evolved from then to now in our History lessons.



Exciting Update: Library Book Loans



We are delighted to share that our newly established school library has already begun issuing books to pupils in Year 6 and Year 5. To ensure that every child enjoys a positive and well-supported introduction to the library, book loans will continue to be rolled out on a phased basis to each year group over the coming weeks.

During their weekly timetabled library sessions, pupils are becoming increasingly confident in navigating the library space. They are learning how to choose books that interest and challenge them, and they are beginning to understand the routines for borrowing and returning items. Staff will continue to guide pupils in making thoughtful reading choices and developing good library habits, helping to nurture both confidence and a lifelong love of reading.

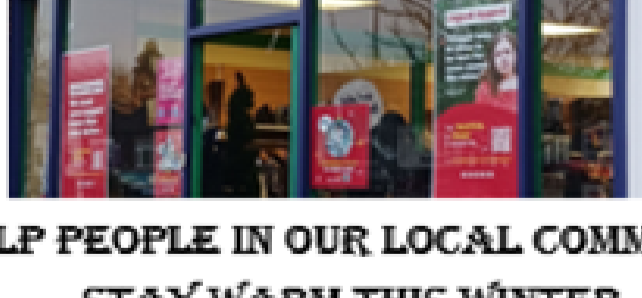
We encourage families to share in this reading journey by enjoying the books together at home and helping children to take care of their chosen titles. Books will be issued on a two-week loan, with the option to renew for a further two weeks or return items early if pupils wish to choose something new.

Thank you for your ongoing support as we embed this exciting new provision into our school. We look forward to seeing our pupils discovering, sharing, and celebrating the joy of reading through our library.



St Giles Hospice

DONATE YOUR UNWANTED AND UNLOVED COATS TO OUR LOCAL CHARITY SHOP IN WYLDE GREEN.



HELP PEOPLE IN OUR LOCAL COMMUNITY STAY WARM THIS WINTER.



BRING YOUR COATS INTO SCHOOL BEFORE FRIDAY 28th NOVEMBER

Setting Parental Safeguards

Setting parental safeguards on your child's devices

If you're viewing this on a screen, tap (or click) the appropriate icon below. If you're looking at this on paper, point your phone's camera at the appropriate QR code and tap the link that appears.

Follow the instructions on the website to exactly, in a particular setting the age of the child. We recommend you set the device not to allow any apps or games to be installed without your permission. Protect your settings with a strong password that is not known to the child.



Wylde Green Primary School

Green Lanes

Wylde Green

B735JL

Email: Enquiry@Wyldegrn.bham.sch.uk